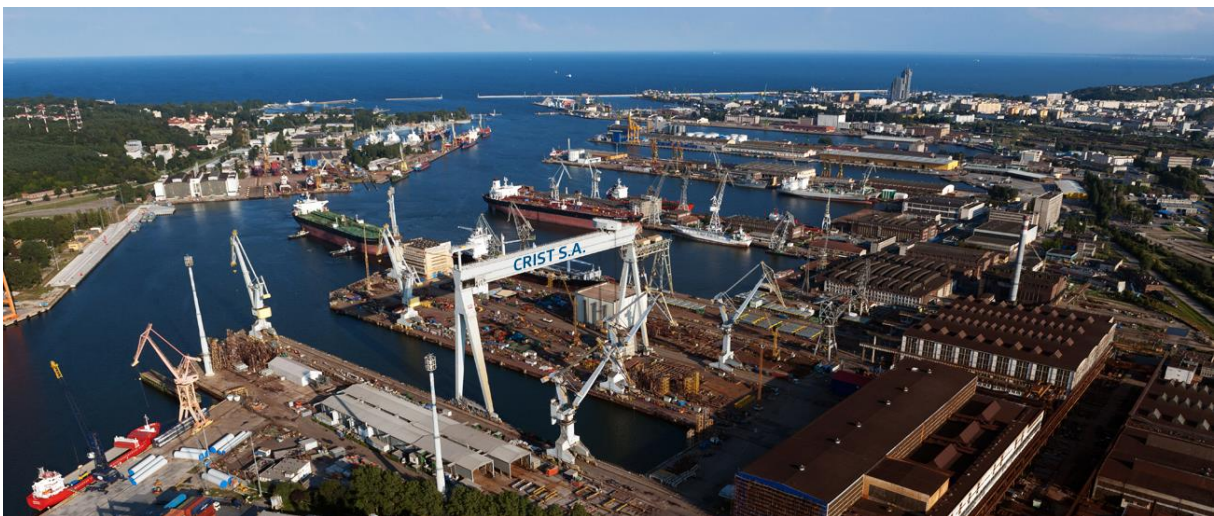




CRIST S.A.
ul. Czechosłowacka 3
81-336 Gdynia
Poland



CRIST S.A. – GENERAL INFORMATION



CRIST S.A. is a production shipyard with above 26 years of experience in the marine industry. The company currently employs 1500 workers (extended up to 2000 people with long term cooperating companies) and has a production capacity of 50 000 tons of steel structures per year. It is one of the largest Polish companies operating in the sector of shipbuilding and maritime technical construction. The production site is located in Gdynia (Poland), where all fabrication and assembling work will be conducted.

CRIST activity started in 1990 – initially as a business partnership of two natural persons and since 2010 as a resiliently growing joint stock company.

Shipbuilding, offshore constructions, steel structures, sea engineering, civil engineering – these are the fields we specialize in. We steadily develop and adjust our offer to changing market demands. We are the only shipyard in Europe which has already constructed 3 units for the installation and servicing of sea wind farms.

CRIST has always been active in the field of shipbuilding and steel constructions. Economic changes and growth of renewable technologies – such as wind and hydroelectric energy – created possibilities of activity on new markets.

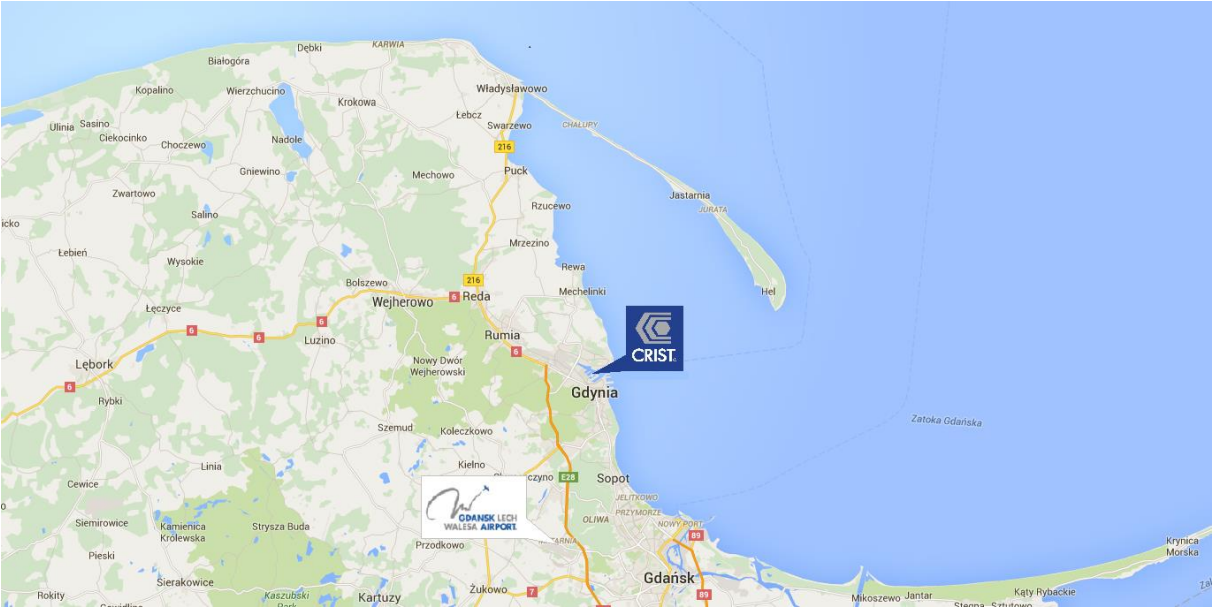
For that reason we are presently participating in the implementation of projects of specialized coastal structures, sea transport and units for exploration of marine resources.

CRIST belongs to the group of companies distinguishing themselves through innovativeness, niche products and the organization of the supply chain. The company

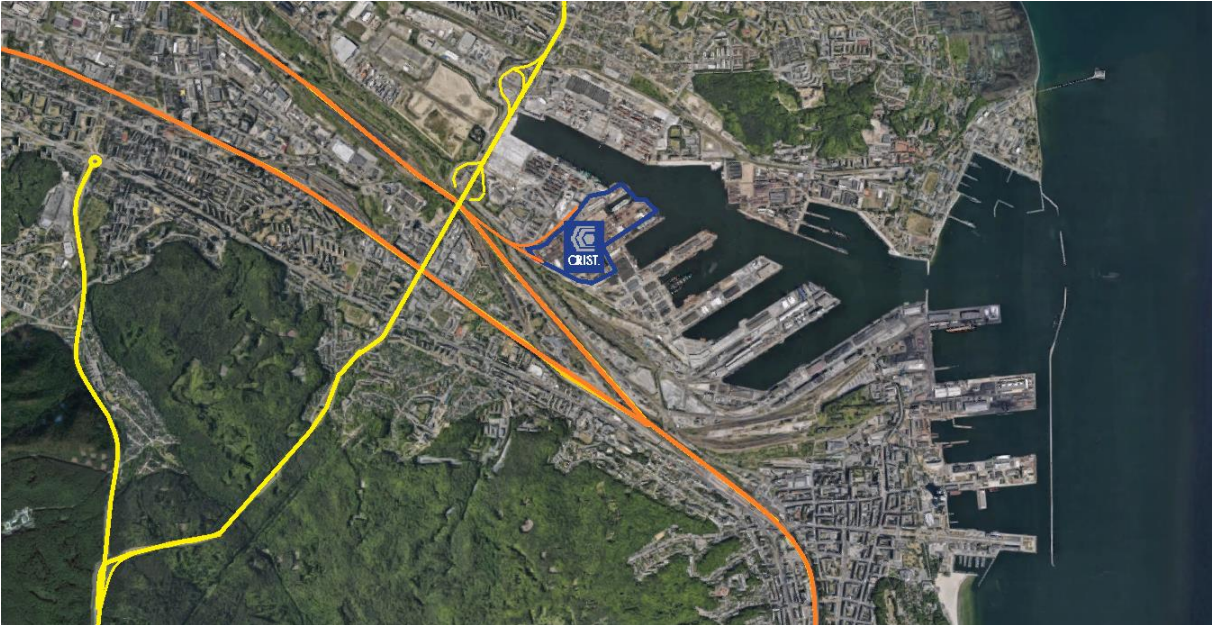
cooperates with Clients from Poland, Germany, Norway, Denmark, Finland, Iceland, France, Belgium, The Netherlands and Scotland

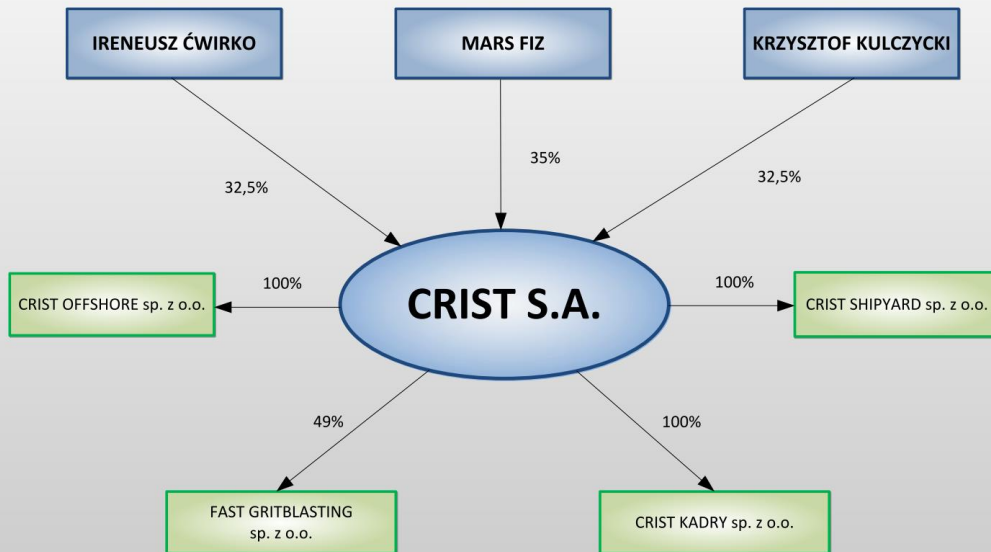
Our priority is to secure services and products which not only meet the acceptance but also exceed Clients expectations and demands. In our performance we focus on reliability. We care about the highest quality which is always controlled and certified by international technical organizations and classification societies.

CRIST S.A is located on south cost of Baltic Sea.



Total area of production plant covers 28 ha next to the Port of Gdynia. Location close to the international Gdańsk Airport (27km) , A1 highway and ferry connections with Scandinavia. CRIST warehouses are connected to railways lines.

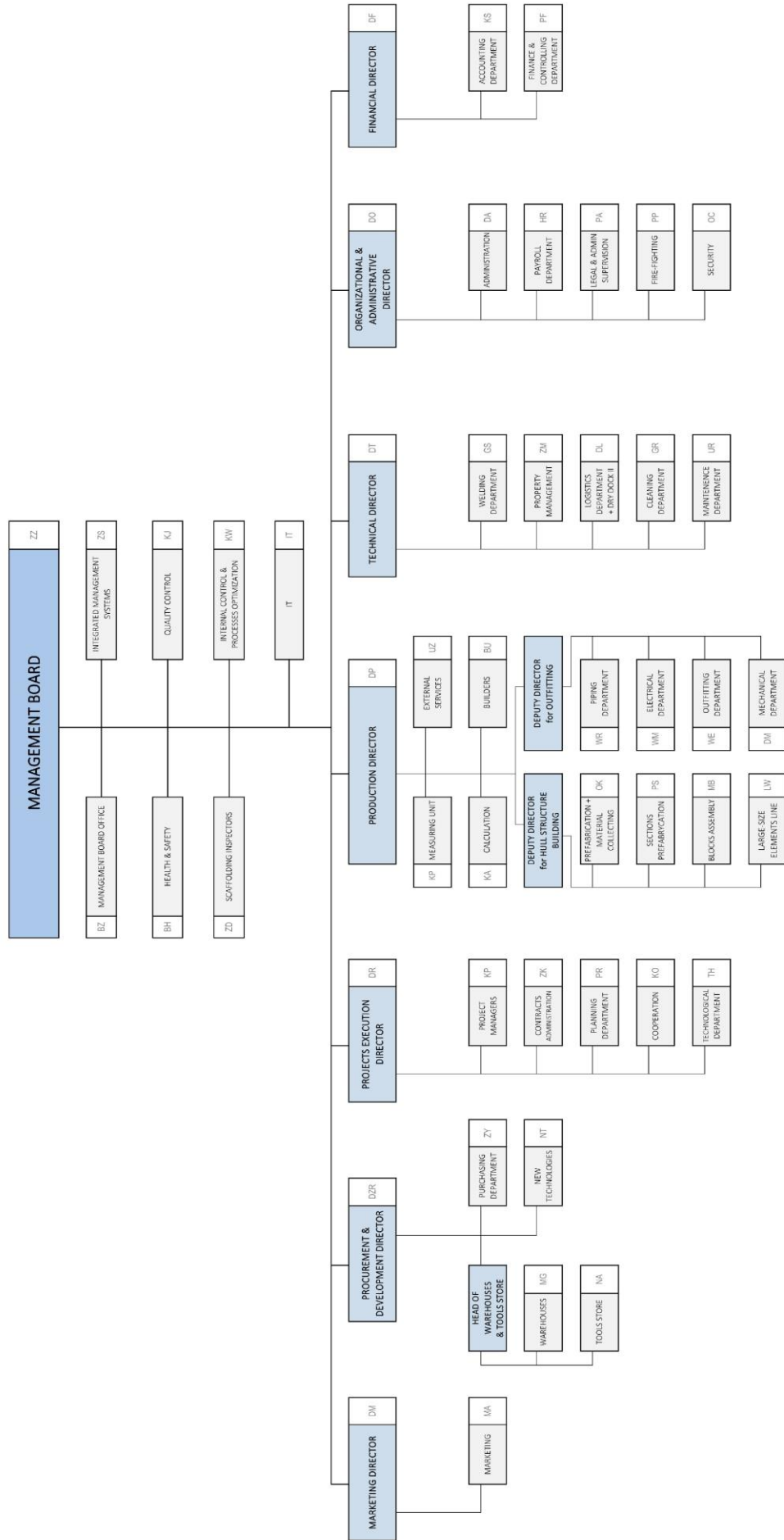




MARS FIZ has been operating since the second half of 2010, authorized by the Polish Financial Supervision Authority. The Fund manages the portfolio of majority stakes in 12 private equity companies. They comprise companies from the sector of ship repairs and offshore steel structure building, as well as companies whose main assets are real estate properties.



ORGANIZATION CHART
CRIST S.A.



as of 04.01.2016

The quality and reliability of our products and processes are certified by following survey and classification societies: LRS – Lloyd’s Register of Shipping, GL – Germanischer Lloyd, DNV – Det Norske Veritas, BV – Bureau Veritas, PRS – Polish Register of Shipping.

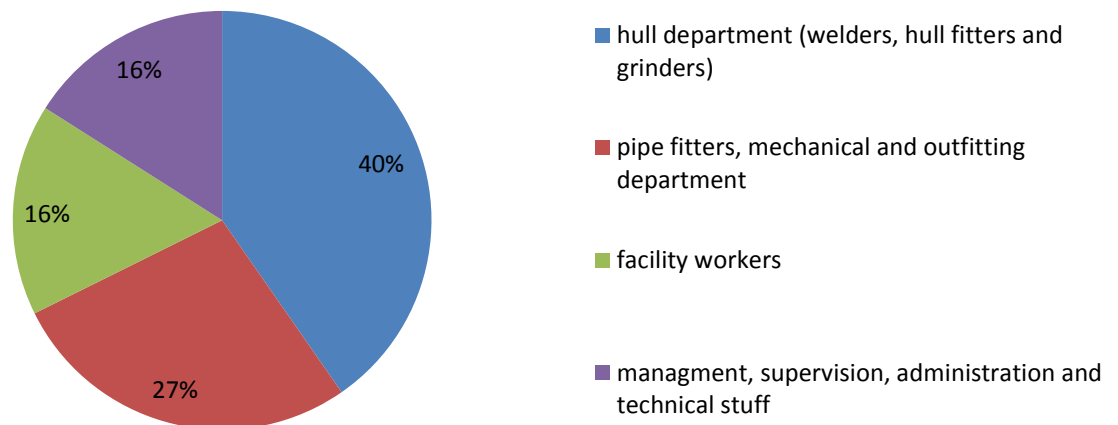
Our Integrated Management System (IMS) is certified by Det Norske Veritas in accordance with ISO 9001:2008 standard, attached “[CRIST S.A. ISO 9001](#)”. IMS is based on Share Point software located in the local intranet web server. There are collected all documents related to management and quality (process maps, process descriptions, procedures, instructions, forms, suppliers evaluation, H&S records and evaluations etc.).

Safety of our employees and partners we pay careful attention. Our safety assurance system is an important part of IMS and is certified by DNV in accordance with ISO 18001:2004 standard, attached “[CRIST S.A. ISO 18001](#)”.

Also the protection of the environment is the subject of our concern. Our system of environmental protection system is a part of IMS and is certified by PRS according to ISO 14001: 2004, attached “[CRIST S.A. ISO 14001](#)”.

Current employment of CRIST S.A. is reaching 1500 people. In which:

Employment



For the larger projects we are utilizing our long term cooperating companies with total employment exceeding **2000 employees**.

The company is experienced in a wide range of shipbuilding. Over 300 projects has been completed. See attached “[20127 3.1.4 CRIST S.A. - Reference List 2016](#)”

Our priority is to secure services and products which not only meet the acceptance but also exceed Clients expectations and demands. In our performance we focus on reliability. We care about the highest quality which is always controlled and certified by international technical organizations and classification societies.